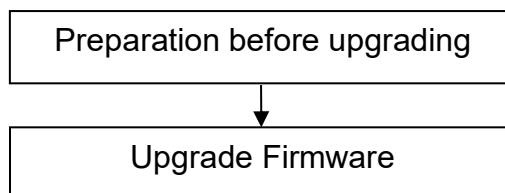


Upgrade Guidance for HD cameras

This firmware is for HD cameras FI9900P, FI9900P V1, FI9900EP, FI9900EP V1, C2, R2, R2 V1 and R4, please check your camera model on the sticker of camera. Updating with the wrong firmware could severely damage and/or brick your camera. Please make sure the firmware is correct.

Note:

System firmware 1.11.1.4, 1.11.1.5, 1.11.1.6, 1.11.1.8 and App firmware 2.x.1.4, 2.x.1.6, 2.x.1.7, 2.x.1.9 or 2.x.1.11, 2.x.1.17, 2.x.1.18, 2.x.1.20, 2.x.1.26 **can** upgrade to this version.

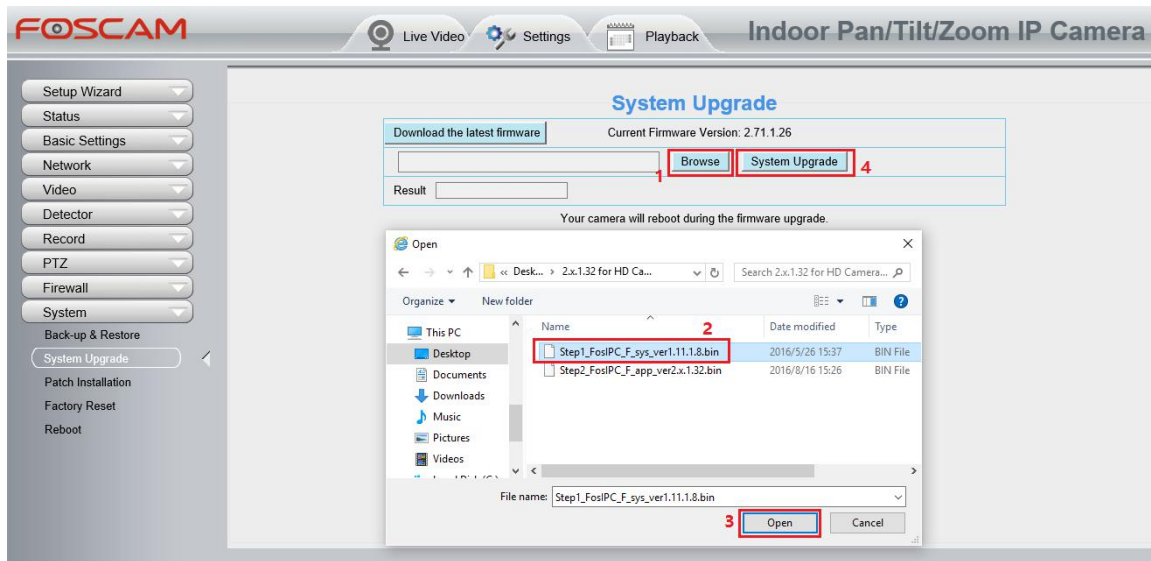
**Preparation before upgrading:**

1. Please restart your camera before the upgrading;
2. Connect camera to router with an Ethernet cable before upgrading;
3. DO NOT upgrade firmware via wireless;
4. DO NOT upgrade firmware over internet, just finish it in LAN;
5. Keep power on during the upgrading;
6. Logging your camera as administrator first, upgrade firmware on web page.
7. Suggest to unplug SD card before upgrade.

Upgrade the Firmware:**Step 1:** Login your camera, go to **Settings → System → System Upgrade**.

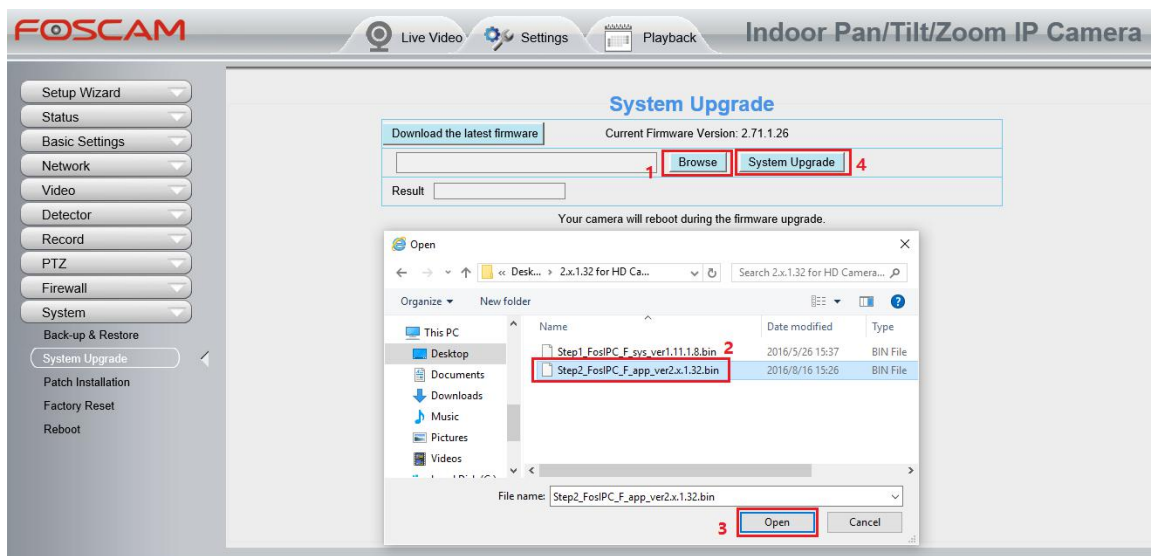
Click **Browse/Choose File**, find the file **Step1_FosIPC_F_sys_ver1.11.1.8.bin** you've extracted in your local hard driver, then click **Open**. Camera will upgrade after you clicking **System Upgrade**.

Note: When "Upgrading, do not power off ... Xs" pop up, camera IP will disappear from the Equipment Search Tool. Then camera will reboot itself, DO NOT power off the camera, please wait till the camera IP reappear in the Equipment Search Tool.



Step 2: Login your camera again, please go to **Settings** → **System** → **System Upgrade**. Click **Browse/Choose File**, find the file **Step2_FosIPC_F_app_ver2.x.1.32.bin** you've extracted in your local hard driver, then click **Open**. Camera will upgrade after you clicking **System Upgrade**.

Note: When “Upgrading, do not power off ... Xs” pop up, camera IP will disappear from the IP Camera Tool. Then camera will reboot itself, DO NOT power off the camera, please wait till the camera IP reappear in the IP Camera Tool.



Step 3: Login again to check if the **System Firmware Version**, **Application Firmware Version** and **Plug-In Version** upgrade correctly.

Device Information	
 Refresh	
Camera Model	---
Camera Name	---
Camera ID	00626E60EAC8
Camera Time	2016/08/15 04:23:51
System Firmware Version	1.11.1.8
Application Firmware Version	2.71.1.32
Plug-In Version	3.3.0.26

Note:

You'd better re-install the plug-in if it did not upgraded;

Congratulations, your camera successfully upgraded to the latest firmware!

End

--- by Foscam Technical Support Team