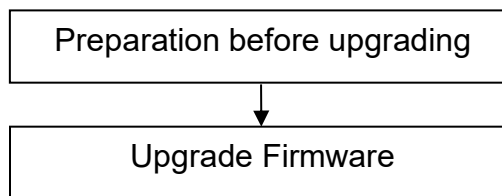


Upgrade Guidance for C1 C1-Lite FI9816P FI9803PV2 FI9800P

This firmware is for HD cameras C1, C1-Lite, FI9816P, FI9803P V2, FI9800P, please check your camera model on the back/rear sticker of camera. Updating with the wrong firmware could severely damage and/or brick your camera. Please make sure the firmware is correct.

Note:

System firmware 1.9.x.1x, App firmware 2.x.1.28, 2.x.1.30, 2.x.1.32, 2.x.1.36, 2.x.1.37 or 2.x.1.39, 2.x.2.5, 2.x.2.16 **can** upgrade to this version.

**Preparation before upgrading:**

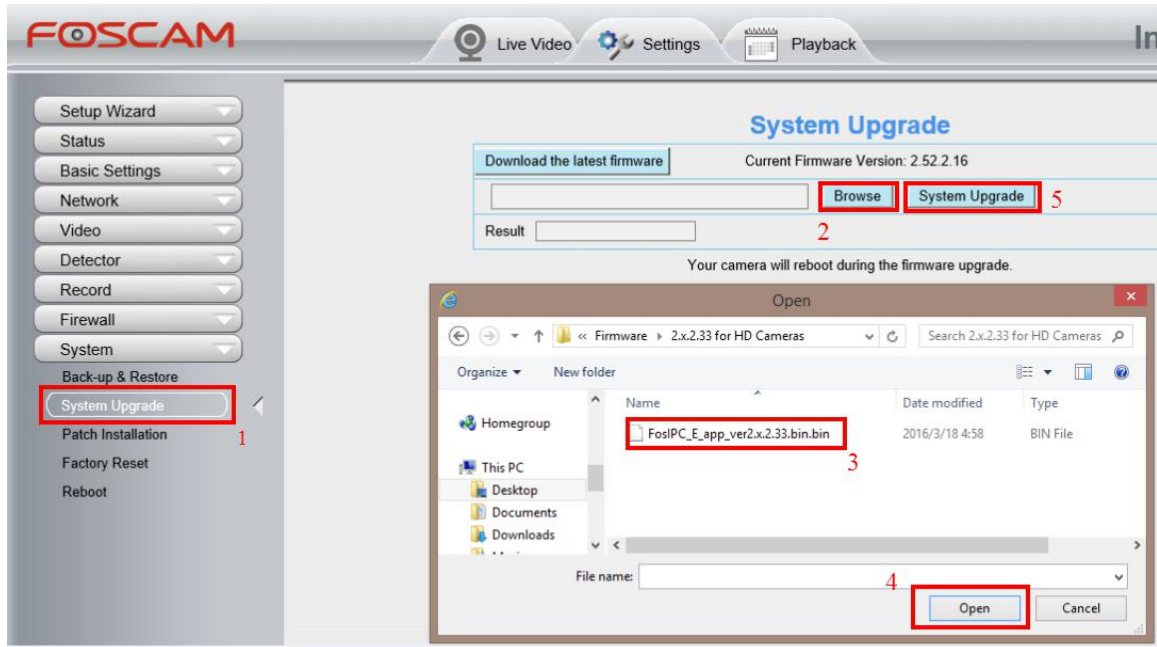
1. Please restart your camera before the upgrading;
2. Connect camera to router with an Ethernet cable before upgrading;
3. DO NOT upgrade firmware over internet, just finish it in LAN;
4. Keep power on during the upgrading;
5. Logging your camera as administrator first, upgrade firmware on web page.
6. Suggest to unplug SD card before upgrading.

Upgrade the Firmware:

Step1: Login your camera, go to **Settings** → **System** → **System Upgrade**.

Click **Browse/Choose File**, find the file [FosIPC_E_app_ver2.x.2.33.bin](#) you've extracted in your local hard driver, then click **Open**. Camera will upgrade after you clicking **System Upgrade**.

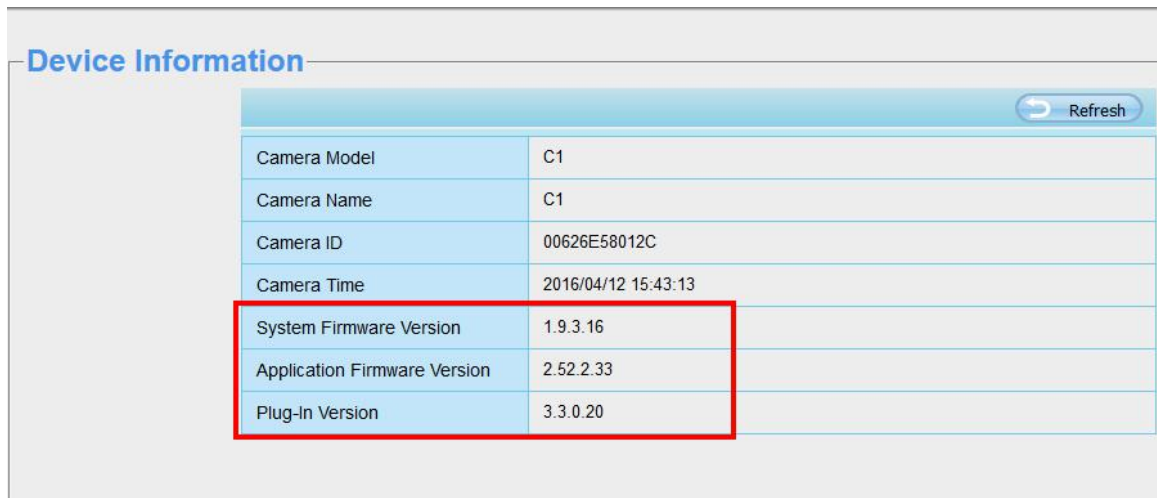
Note: When “Upgrading, do not power off ... Xs” pop up, camera IP will disappear from the Equipment Search Tool. Then camera will reboot itself, DO NOT power off the camera, please wait till the camera IP reappear in the IP Camera Tool.



Step 2: Login again to check if the **System Firmware Version**, **Application Firmware Version** and **Plug-In Version** upgrade correctly.

Note:

You'd better re-install the plug-in if it did not upgraded;



Congratulations, your camera successfully upgraded to the latest firmware!

End

--- by Foscam Technical Support Team