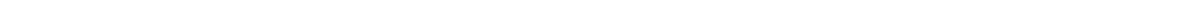


# **Surf 16 Ch**

# **User Manual**



### **IMPORTANT NOTICE**

1. This software is specially designed to work cooperate with the 9060 series and 9000 series network video products of AVIOSYS company.
2. Minimum Intel Celeron 2.0 or compatible AMD processor, 512M RAM and WINDOWS XP operation system is suggested. We also suggest the user not to run software that using a lot of hardware resource while running this software.
3. Please check your network equipment, network junction, network bandwidth, switch, router and internet connection to make sure they are reliable. The transfer bandwidth of these equipments will directly affect the running fluency of this software.

Copyright © 2007 Aviosys. All rights reserved. No part of this publication may be reproduced, stored in a retrieval system, or transmitted in any form or by any means, electronic, mechanical, photocopying, recording or otherwise, without the prior written consent of Aviosys

All trademarks and products mentioned in this document are the properties of their owners.

We may not notify you immediately if there are any changes in the software specification.

# Table of Content

<b>1. INTRODUCTION .....</b>	<b>3</b>
<b>2. INSTALLATION .....</b>	<b>3</b>
MINIMUM SYSTEM REQUIREMENTS.....	3
<b>3. INTERFACE DESCRIPTION .....</b>	<b>4</b>
<b>4. INITIALIZATION.....</b>	<b>4</b>
<b>5 SCENE AREA SETTINGS.....</b>	<b>5</b>
ADD A CAMERA .....	6
TURN OFF A CAMERA .....	6
ROTATE A CAMERA .....	6
START /STOP VIDEO RECORDING .....	7
FULL SCREEN/EXIT FULL SCREEN.....	7
SEARCH CAMERA .....	7
SAVE CURRENT SETTINGS/ LOAD SETTINGS .....	7
<b>6 FUNCTION BUTTON SETTINGS .....</b>	<b>7</b>
REFRESH BUTTON .....	7
SEARCH BUTTON .....	8
ALL START RECORDING/ALL STOP RECORDING .....	8
NEXT /LAST TEMPLATE BUTTON .....	9

## 1. Introduction

Surf 16 Ch is specially designed to work cooperated with the 9060 series and 9000 series network video products of AVIOSYS company. Through the interface of this software, you can watch multiple sets of preset network video in LAN or internet , so that you can achieve many functions such as multiple camera video supervise management and video recording. It can be used in many occasions like security protection, children or patient watching, long-distance teaching, TV play and video game.

## 2. Installation

Insert the CD in CD-ROM, click "Installation Search Tool " and install program " **IP\_KamVid 1070** " , **after install, you can see the shortcut** - Surf 16 Ch – on desktop ( if install th eprgram in C: , you can get th eprogram in C: IP Family ) .

Double click " Surf 16 Ch " to run this software .

### NOTICE :

1. After running, there will be at least three files in the install directory, Surf 16 Ch.exe, template.ini and Surf 16 Ch.ini. If you have saved other screen setting mode, other ini file will be fund in this directory. Please DO not change or delete this files or it will cause the software running improperly. IF you have recorded video, this directory may include some wmv files.
2. The firewall in your pc may ask if permit the Surf 16 Ch to visit network while running Surf 16 Ch at the first time, please choose always permit.

### Minimum System Requirements

- Minimum Intel Celeron 2.0 or compatible AMD processor
- WINDOWS XP operating system
- Minimum 512MB RAM
- VGA Card: with capability of displaying full-Colors and DirectDraw support
- Network card with RJ45 port
- Ethernet Hub / Router
- Internet network (Ethernet, ADSL or other ways, depends on whether you need internet supervise ability)

### 3. Interface Description

When you first enter the interface of Surf 16 Ch, you will see the figure below:



The interface is made up of three parts: video area, camera list in the LAN area and function button area.

### 4. Initialization



Every time you start running the Surf 16 Ch, it will automatically search the 9060 or 9000 series network camera and 9200 series product in the LAN, and display them in the camera list in the LAN.

 The screenshot shows the 'AddCamera' dialog box. It contains the following fields and options:
 

- IP Address:** 192.168.10.84
- Port:** 84
- CameraName:** Cam\_84
- UserName:** admin
- Password:** \*\*\*\*\*
- ☐ NormalQuality
- ☐ Rotation 180
- ☐ RecordCell
- ☐ MD Start Recgrd
- ☐ MD Snapshot Jpeg
- Snapshot Interval(sec.):** 10
- Add** button

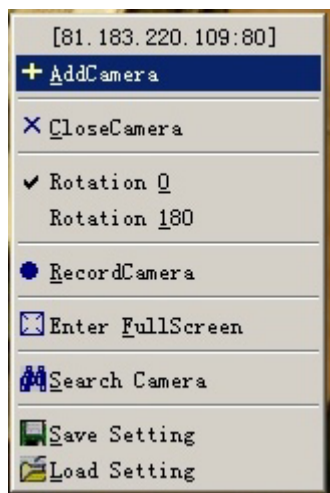
Click any scene frame in the scene area in any state, the scene frame will turn red and under selected state. Then double click a camera in the camera list area, fill proper user name, password in the pop out menu, choosing whether use normal video quality, whether rotate the video, whether record the video, whether record the video or snapshot after motion detect triggering. Then click **Add** button to finish settings for this camera. You can click in the rest scene area or a scene area that already have image to let its frame turn red, and continue adding a LAN camera or internet camera (please refer to the use method of “search” button in section 6, “Function button settings”) and set these cameras one by one.

#### NOTICE :

1. The pc running the Surf 16 Ch must in the same subnet with the network camera you want to visit otherwise you can not see the video scene.
2. If you choose normal image quality, the camera will use 320\*240 resolution and 75% compression ratio in default. If you did not select this option, the camera will output video according to the image quality and compression ratio set in IE browser by the user.
3. The recorded video file is in wmv format, the file name is like:  
IP of camera\_time.wmv. Recorded wmv files are saved to the directory where Surf 16 Ch.exe is or specified in setup function..
4. This software will store you settings for each network camera. Next time you open a camera it will maintain the state when you close it last time, unless you delete the Surf 16 Ch.ini file in the software install directory.
5. The function of record the video or snapshot after motion detect triggering is void unless user set the motion detect on IE page.
6. The function of snapshot after motion detect triggering is three each interval of 10 seconds moves again, 10 seconds to the default value, you can also modify this value.
7. If your network connection is unreliable or the bandwidth is not sufficient, you may  
  
 see the notice “connect timeout” or  in the image, please check the network connection.
8. you can save the camera settings such as IP address, parameter, user name and password to a ini file to avoid set that again when install the software in other pc. Please refer to the **Save current settings /reload settings** in the next section.

## 5 Scene area settings

Having finished the software setting, you can operate directly with each camera scene, such as adjust or record. If you click the scene of one camera and draw it to a new position, the scene of this camera will change over with the scene at the new position.



### Add a camera

This function let user can add a new camera in a click and selected window, choosing add a new camera in the right click menu. Fill in the pop out window with the IP address, port, user name and password of the new camera. Choose whether use the normal image quality, whether rotate the scene, whether record the video, and then click **ADD** button to add this camera.

### Turn off a camera

This function let user can turn off the selected camera by choosing **turn off camera** option in the right click menu.

### Rotate a camera

The scene of camera you see may be upside-down because of the install method of camera. You can rotate the scene for 0 degree or 180 degree to let the scene fit the human vision habit and convenient for being observed.

### Start/stop video recording

This function can record the video of selected camera to wmv format video files. The name of recorded video file is like IP\_time.wmv, for example: 192.168.10.83\_20070703110826.wmv, and the recorded video file will be saved to the directory where Surf 16 Ch.exe is or specified in setup function.. If current state is recording, the **stop record** option will appear.

### Full screen/exit full screen

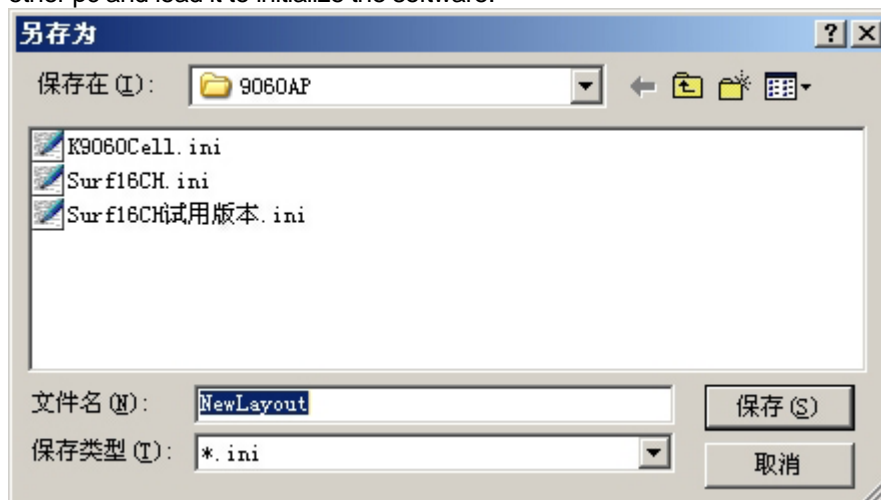
This function can display the interface of whole software in full screen form or in normal form.

### Search camera

This function can search camera in the internet and display the scene of camera in selected scene frame. A search window will pop out when click this option. Please refer to the settings of search button in next section "function button settings".

### Save current settings/ load settings

This function is used to save the parameter settings of each camera in the scene frame of your software to a single file. You can load such a file to load a saved original setting. Right click at the scene frame and select **save setting**, fill a new file name in the pop out windows. Then this setting will be saved as an ini file. You can copy this ini file to other pc and load it to initialize the software.



## 6 function button settings

### Refresh button

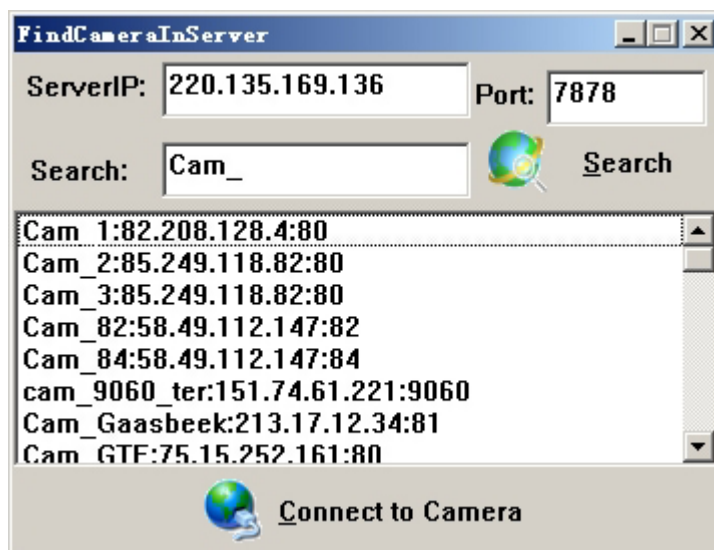
This function is used to search the 9060/9000 series network camera and 92 series products which is working and connected in the LAN, and display them in the LAN camera list. User can add them to scene area, please refer to add a camera option in last section "scene area settings".



## Search button

This function is used to search the 9060/9000 series network camera in the internet. Because many user's internet connection is using temporary assigned IP address (such as ADSL), we afford the IP server in order to search the IP address of camera in the internet. When a configured 9XXX equipment start running, it will report its IP address, port and equipment name to IP server whose default IP address is 220.135.169.136 automatically. The other user can visit the IP server through software and gain the connection path (which means IP address) by the equipment name of 9XXX.

Click the search button, the following menu will pop out:



If you have not setup your own IP server, please use the IP server we provide for free, no need to change the IP address 220.135.169.136 and port number 7878. fill in the search window with your 9XXX equipment name and click search button, the software will search the online 9XXX equipment which matches the name in the IP server and display the search result on the bottom of the window. You can find the equipment you need in the window and double click it. A configure window will pop out, fill in it with proper user name and password, choose whether to use normal image quality, whether to rotate the scene, whether to record the video and then click **ADD** button to add this camera.

### NOTICE:

1. You need to set the IP address, port of the IP server in the webpage of your 9XXX equipment, and give a particular name for it in order to be searched conveniently.
2. The IP server is kindly provided by AVIOSYS Company for the customers. User should judge the risk by yourself before using it and choose to use this function or not. The AVIOSYS Company will not take any consequences such as caused by unreliable internet connection, server failure, improper use or IP address gained by others.

## Record all/ stop record all

This function is used to record / (or stop recode) all scenes in the scene window to a wmv file; the file name is like 16ch\_time.wmv, for example 16CH\_20070703155452.wmv. The recorded video file will be saved to the directory where Surf 16 Ch.exe is or specified in setup function..

### Record/ stop record

This function is used to record / (or stop recode) selected state scenes in the scene window to a wmv file; The name of recorded video file is like IP\_time.wmv, for example: 192.168.10.83\_20070703110826.wmv, The recorded video file will be saved to the directory where Surf 16 Ch.exe is or specified in setup function..

### Snapshot

This function is used to snapshot the selected state scenes in the scene window, The recorded video file will be saved to the directory where Surf 16 Ch.exe is or specified in setup function.

### Next /last template button

We provide many kinds of templates for user and you can change it as your wish. Select a layout form and click the **next /last template** button to adjust it.

### Setup

This function is used to setting password, recoding or snapshot file directory, the max size of wmv file, weather record after start up.

